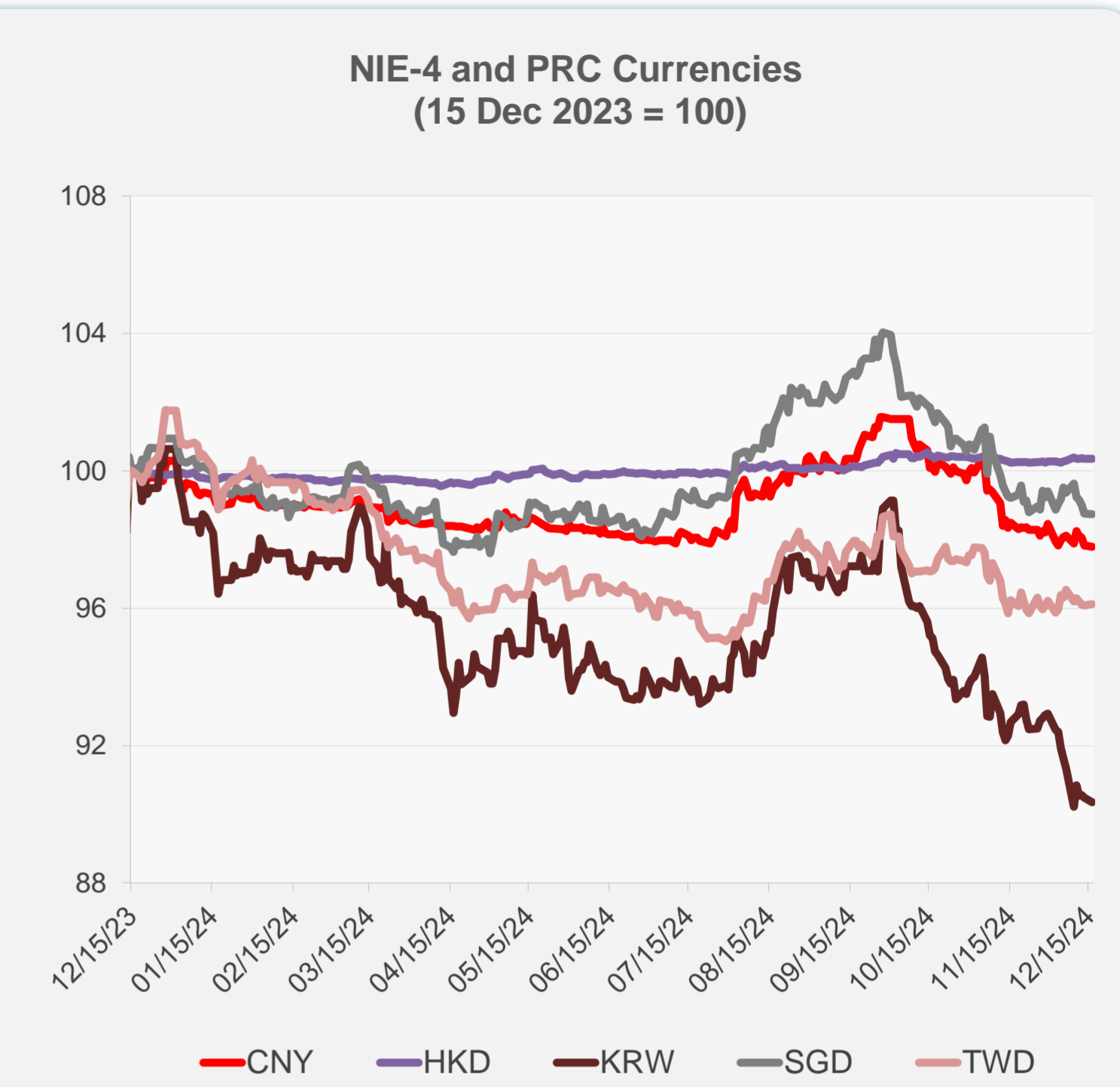
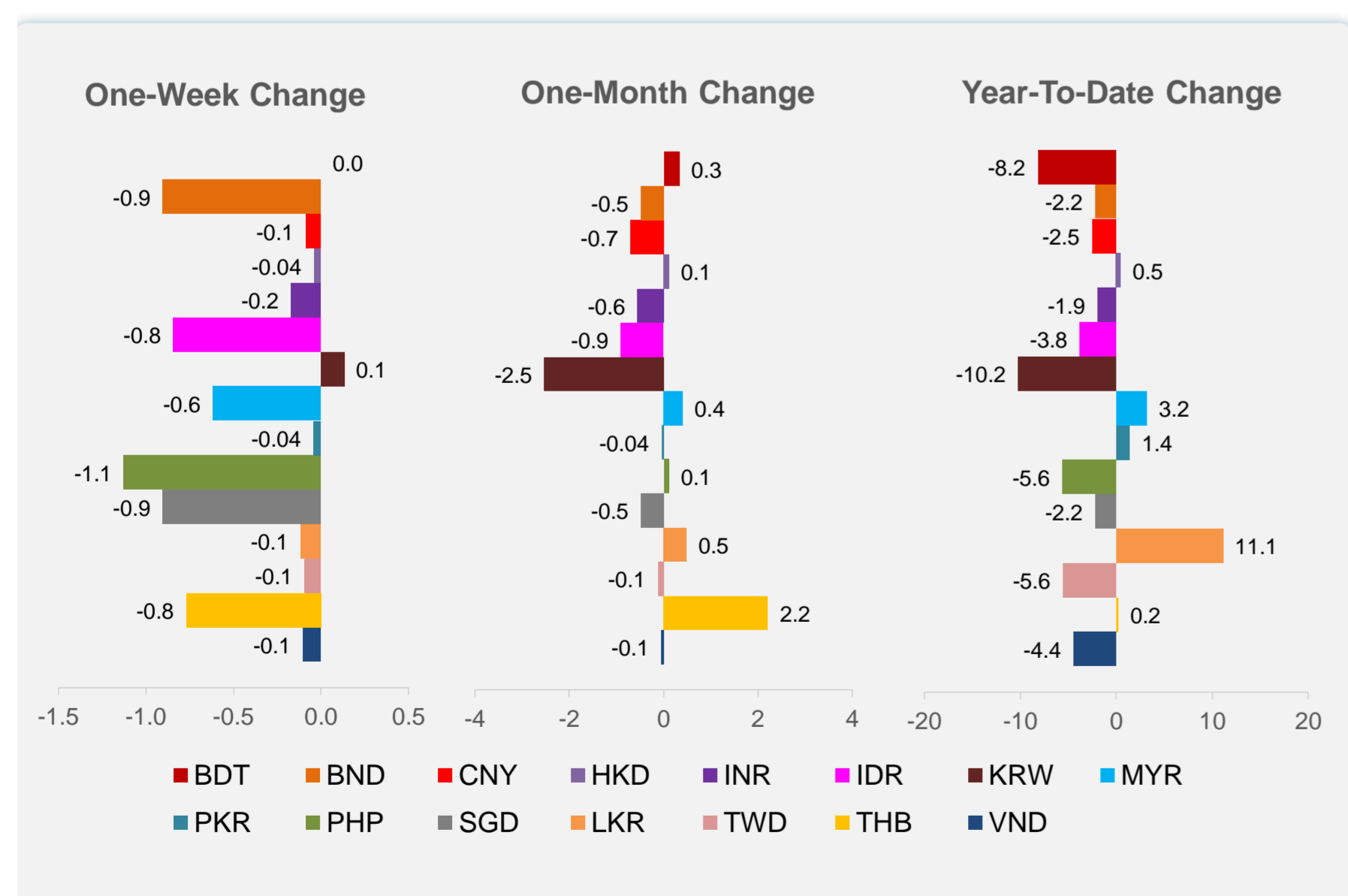
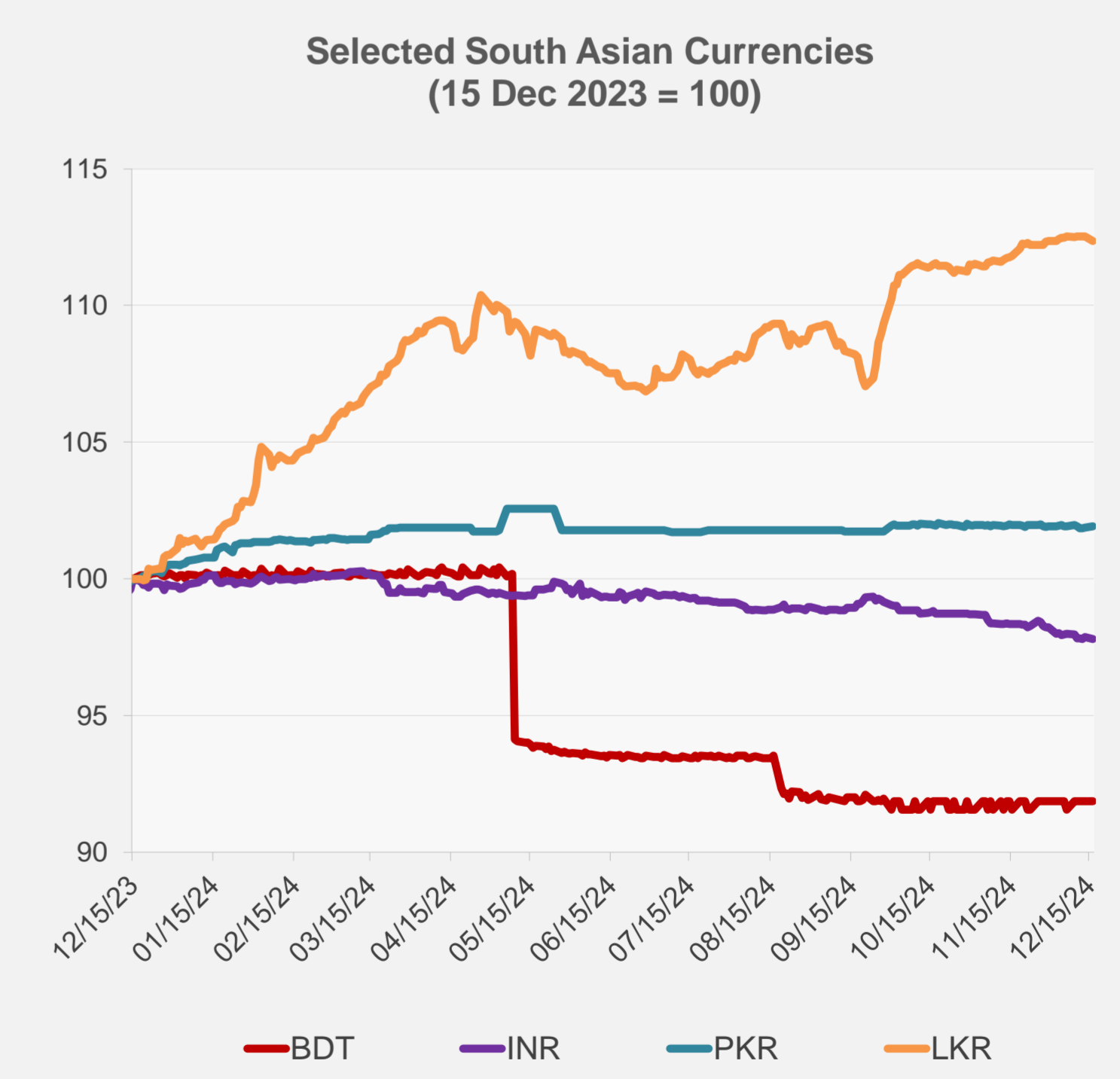
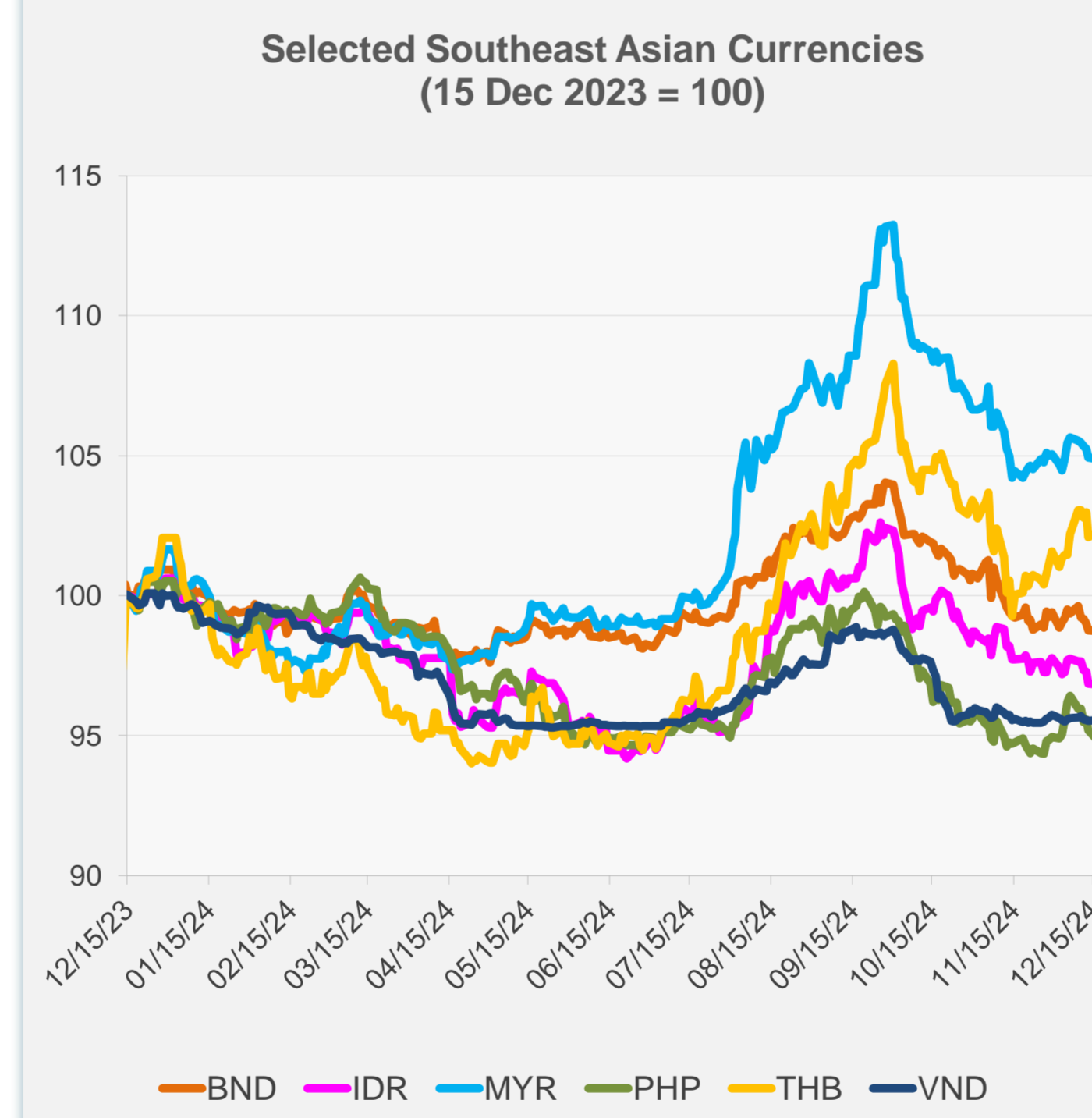


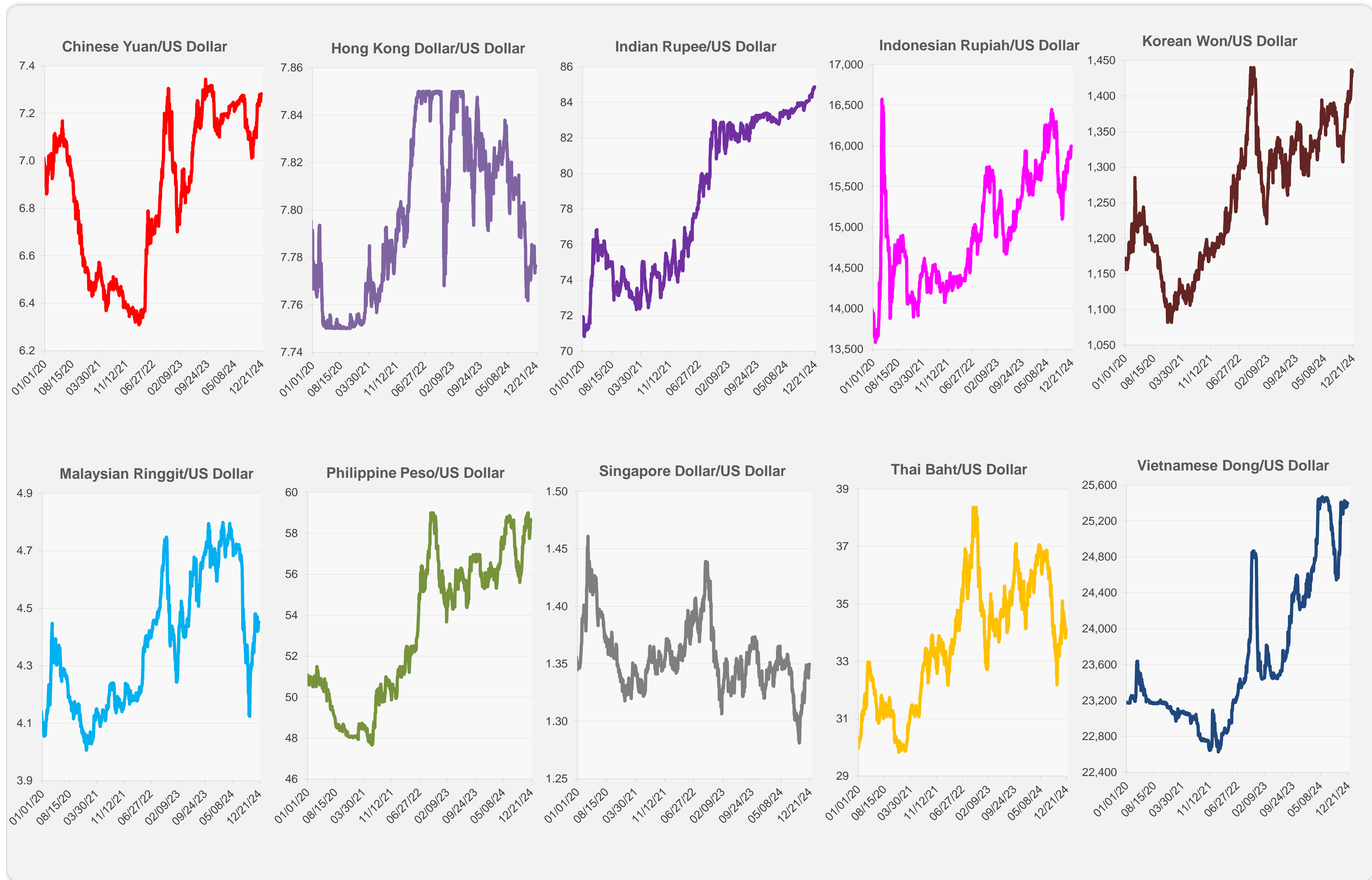
	Latest Closing	% change from Previous Day	% change from 01-Jan-24
Euro	0.95	0.18	-4.87
Japanese yen (JPY)	154.24	-0.36	-8.65
Bangladeshi taka (BDT)	119.50	0.00	-8.16
Brunei dollar (BND)	1.35	-0.02	-2.19
Chinese yuan (CNY)	7.28	-0.04	-2.50
Hong Kong dollar (HKD)	7.78	0.00	0.45
Indian rupee (INR)	84.87	-0.09	-1.93
Indonesian rupiah (IDR)	16,000.00	-0.03	-3.77
Korean won (KRW)	1,434.90	-0.15	-10.23
Malaysian ringgit (MYR)	4.45	-0.06	3.18
Pakistan rupee (PKR)	277.94	0.04	1.40
Philippine peso (PHP)	58.68	-0.33	-5.60
Singapore dollar (SGD)	1.35	-0.02	-2.19
Sri Lanka rupee (LKR)	290.62	-0.14	11.13
Taipei,China NT dollar (TWD)	32.52	0.03	-5.55
Thai baht (THB)	34.07	0.17	0.20
Vietnamese dong (VND)	25,395.00	0.04	-4.44



NIE = Newly Industrialized Economies



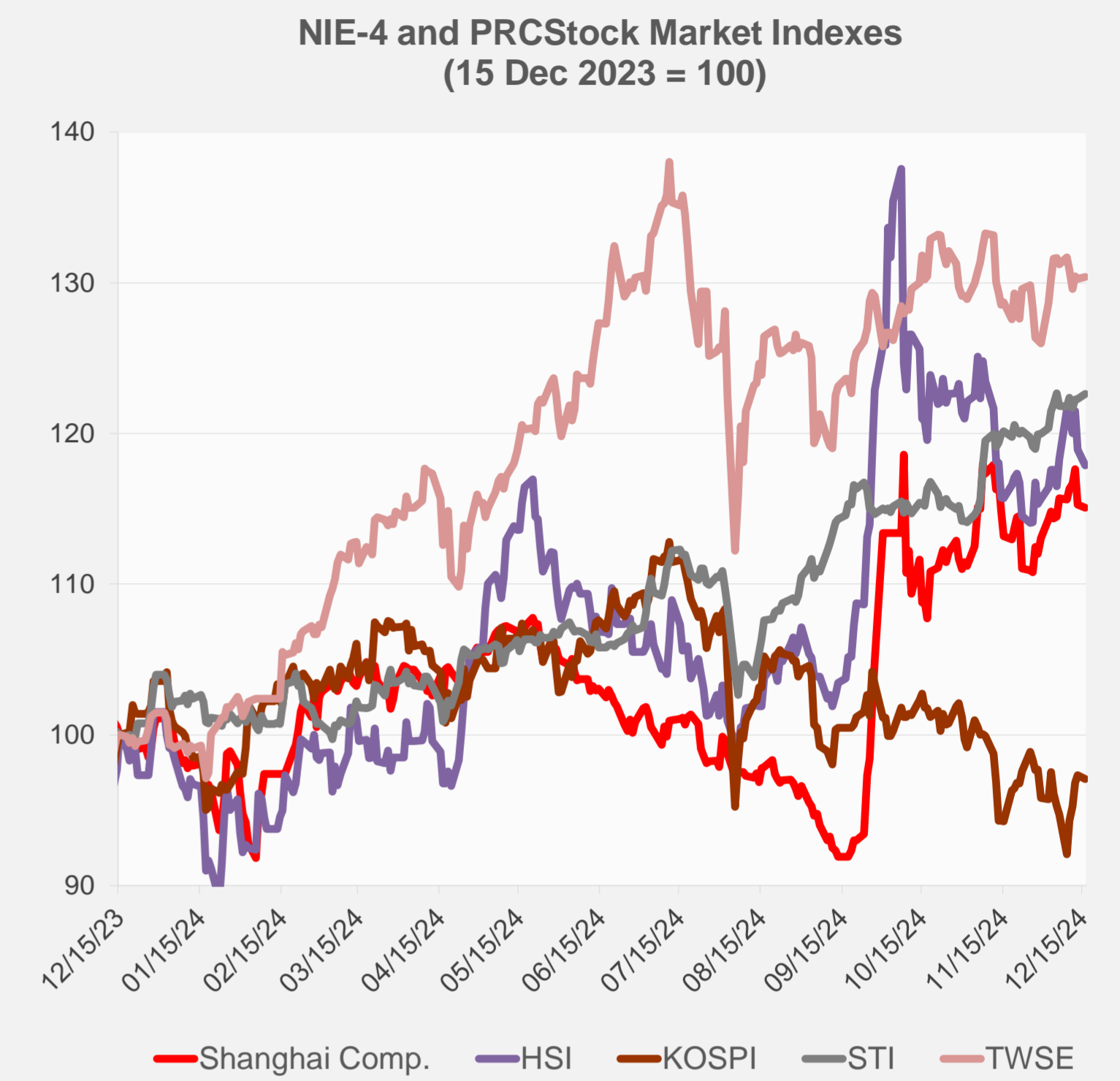
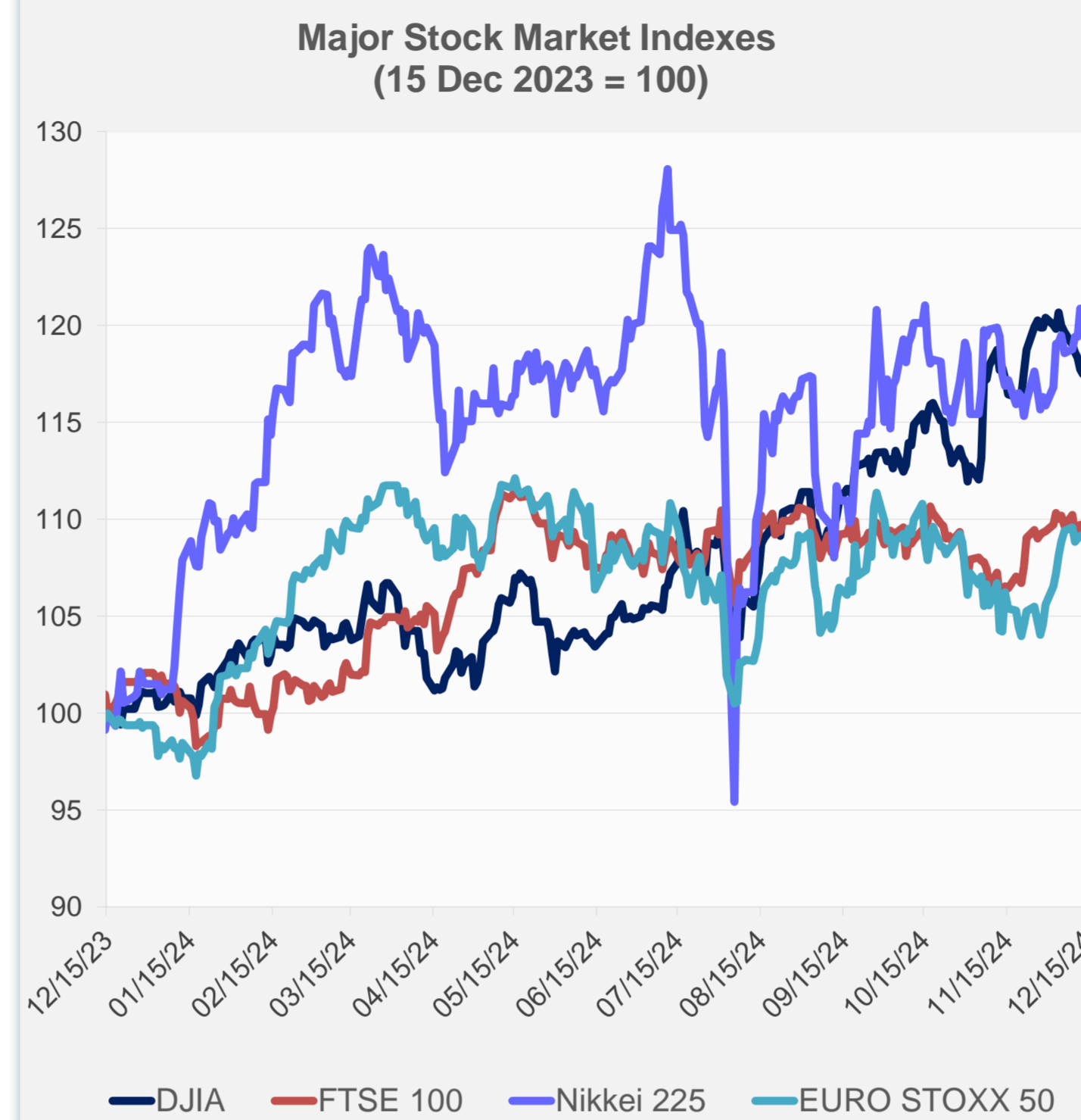
Note: Negative/Decreasing values indicate depreciation of local currency, and positive/increasing values indicate appreciation.  
Source: ADB calculations using data from Haver Analytics.



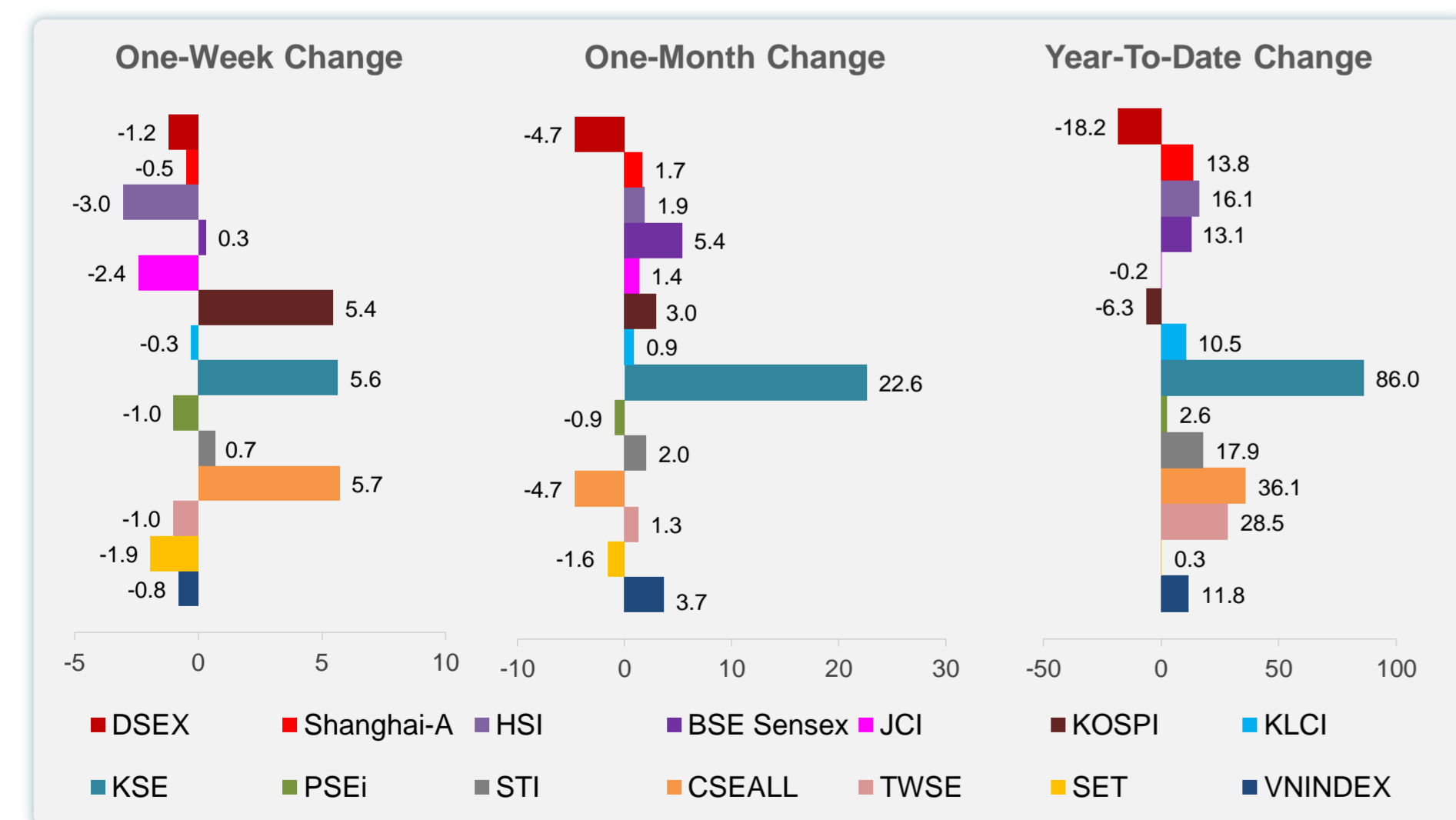
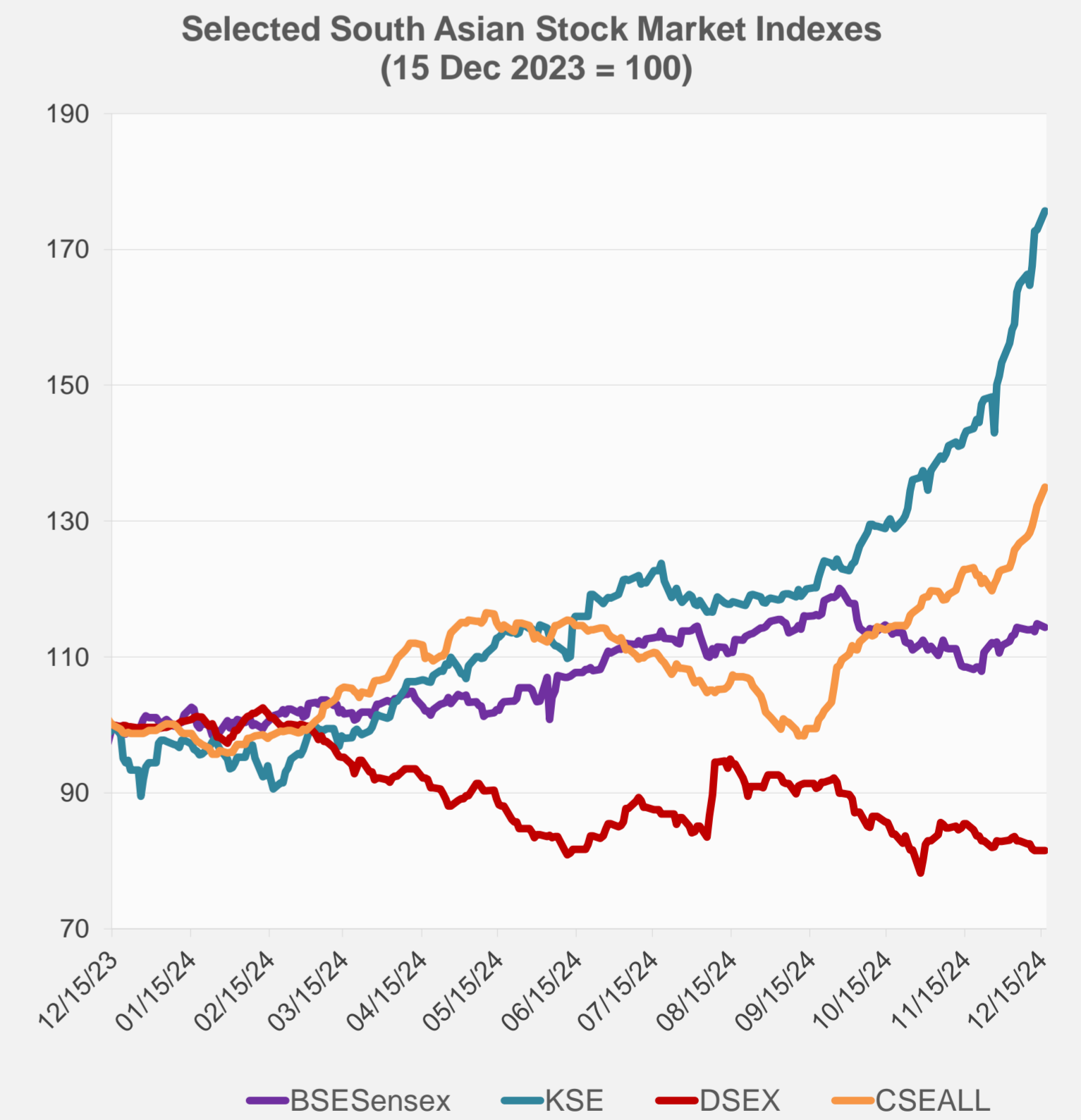
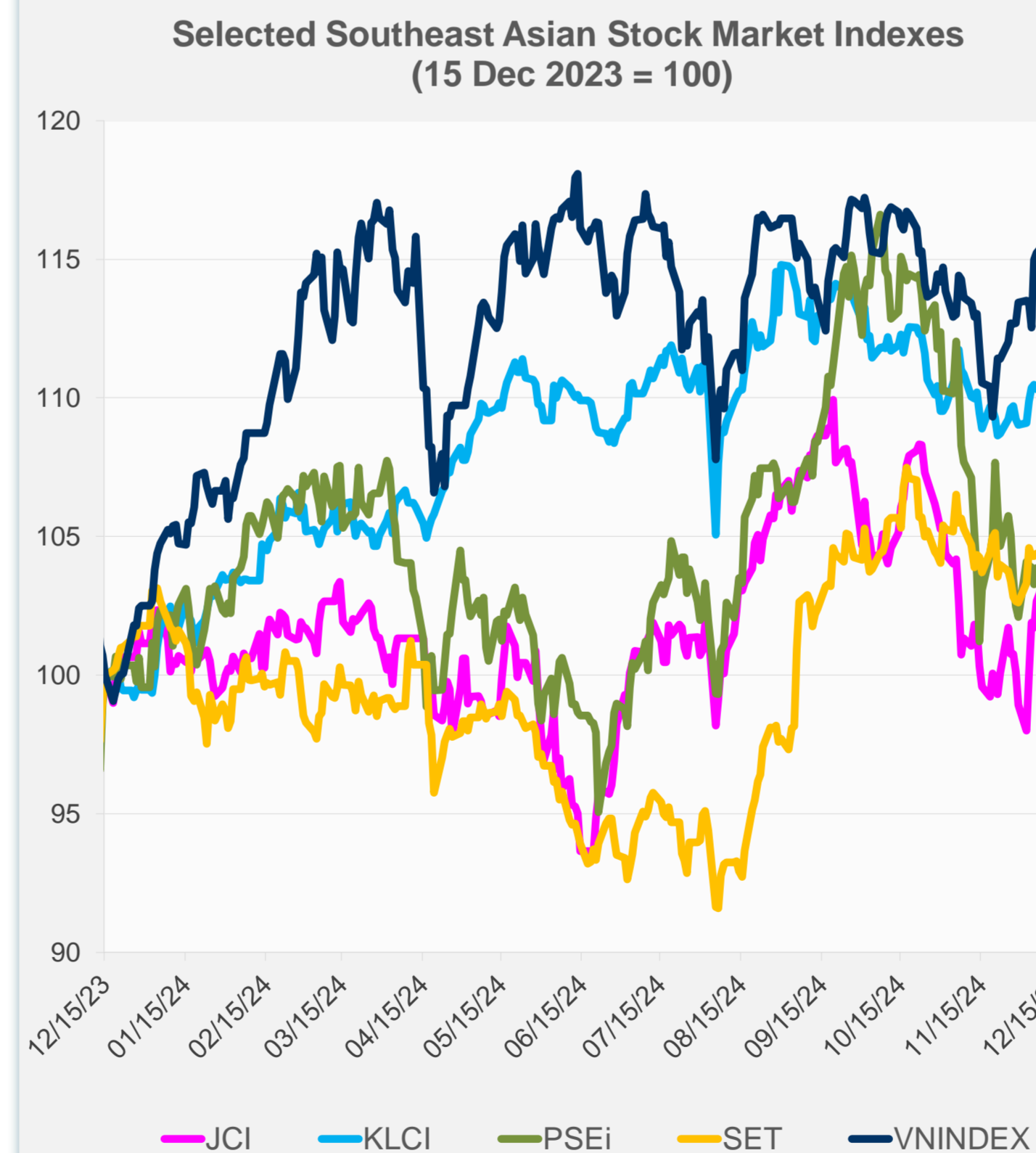
Source: Haver Analytics.

Daily Market Watch  
**STOCK INDEXES**

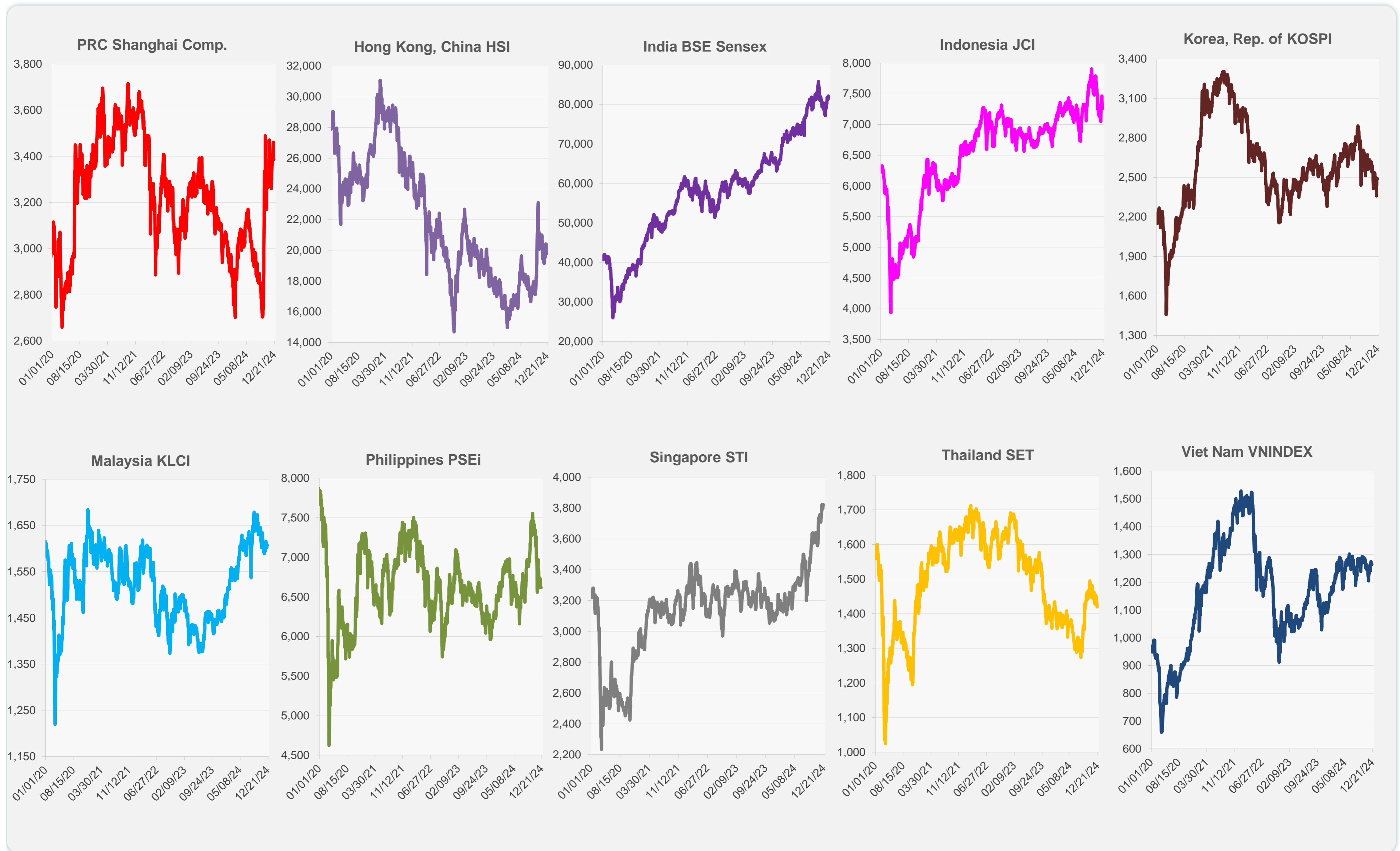
	Latest Closing	% change from Previous Day	% change from 01-Jan-24
US Dow Jones Ind Avg	43,717.48	-0.25	15.99
US NASDAQ	20,173.89	1.24	34.39
US S&P 500	6,074.08	0.38	27.34
UK FTSE 100	8,262.05	-0.46	6.84
EURO STOXX 50	4,947.03	-0.42	9.41
Japan NIKKEI 225	39,457.49	-0.03	17.91
Bangladesh DSEX	5,105.43	0.00	-18.22
PRC Shanghai Comp.	3,386.33	-0.16	13.83
Hong Kong, China HSI	19,795.49	-0.88	16.12
India BSE Sensex	81,748.57	-0.47	13.11
Indonesia JCI	7,258.63	-0.90	-0.19
Korea, Rep. of KOSPI	2,488.97	-0.22	-6.26
Malaysia KLCI	1,606.85	-0.12	10.46
Pakistan KSE 100	116,169.41	1.63	86.02
Philippines PSEi	6,615.16	-0.02	2.56
Singapore STI	3,821.03	0.28	17.92
Sri Lanka CSEALL	14,500.44	2.08	36.10
Taipei, China TWSE	23,039.90	0.08	28.49
Thailand SET	1,419.72	-0.83	0.27
Viet Nam VNINDEX	1,263.79	0.10	11.85



NIE = Newly Industrialized Economies



Sources: ADB calculations using data from CEIC Data Company and Haver Analytics.



Sources: CEIC Data Company and Haver Analytics.

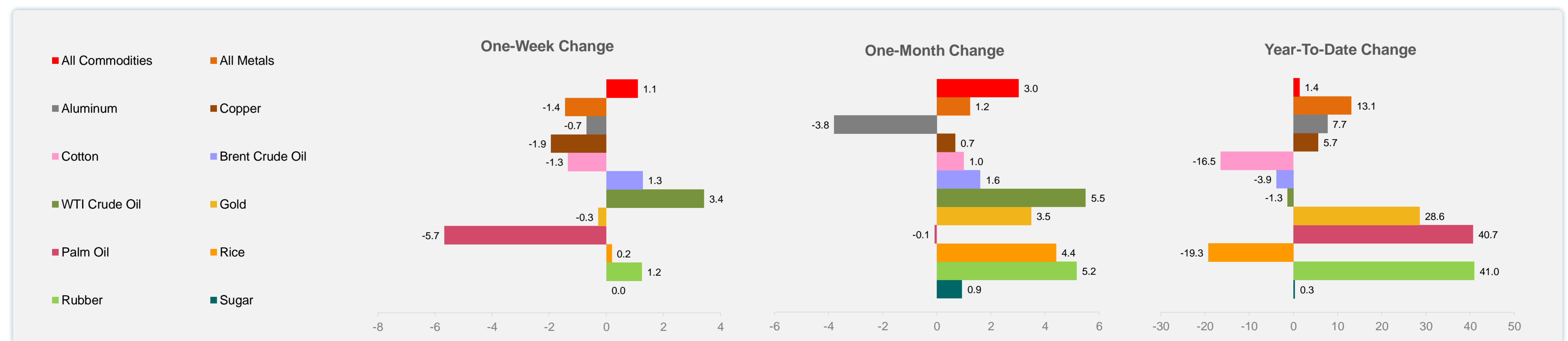
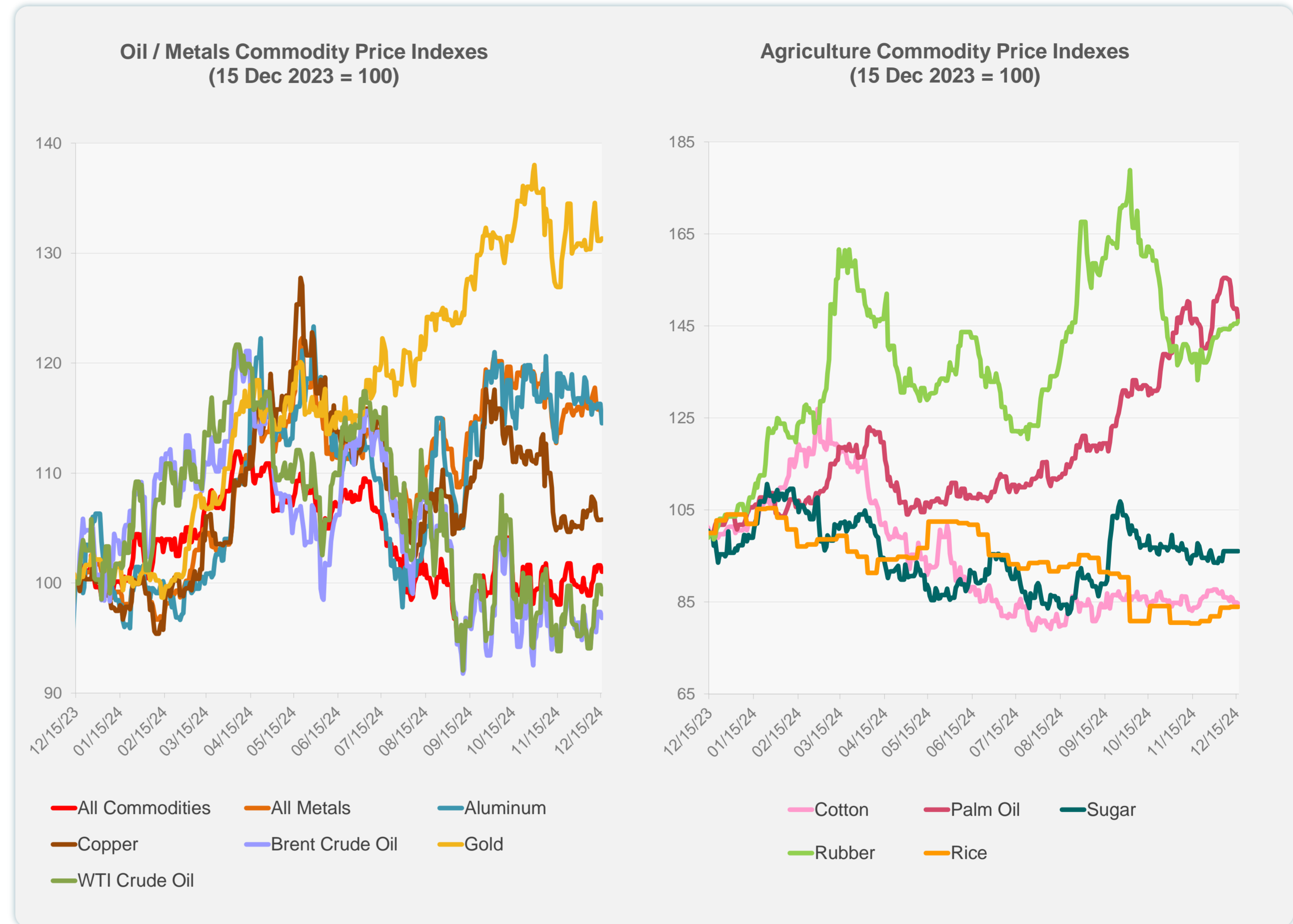
Daily Market Watch  
**COMMODITY PRICES**

17 December 2024, 9:00 AM Manila

	Unit	Latest Closing	% change from Previous Day	% change from 01-Jan-24
S&P All Commodities	US\$	543.15	-0.58	1.40
S&P All Metals	US\$	313.84	-0.61	13.13
Aluminum	US\$/metric ton	2,526.97	-1.51	7.74
Copper	US\$/metric ton	8,942.47	0.02	5.65
Cotton	US cents/lb	65.56	-0.32	-16.48
Brent Crude Oil	US\$/barrel	74.61	-0.53	-3.85
WTI Crude Oil	US\$/barrel	70.71	-0.81	-1.31
Gold	US\$/troy oz	2,652.72	0.17	28.59
Palm Oil	US\$/metric tonne	1,138.04	-1.62	40.67
Rice <sup>1</sup>	US\$/metric ton	544.00	0.00	-19.29
Rubber <sup>2</sup>	US\$/kg	244.00	0.41	40.96
Sugar	US cents/lb	20.54	0.00	0.34

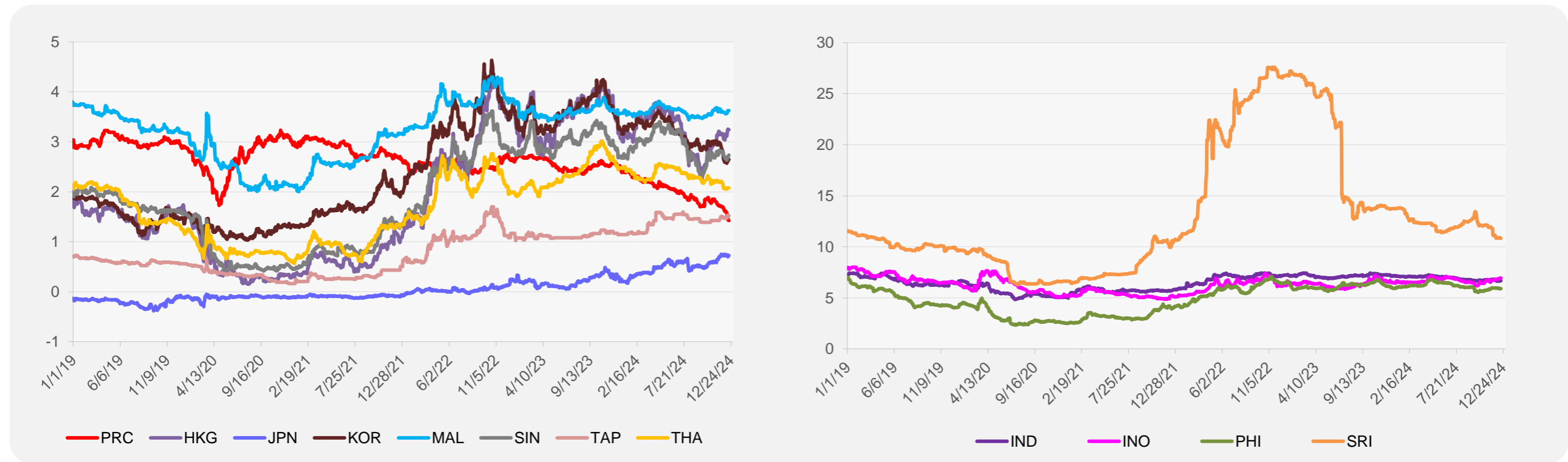
<sup>1</sup> Latest closing price from 12 December 2024.

<sup>2</sup> Singapore Exchange, Ribbed Smoked Sheet Rubber.

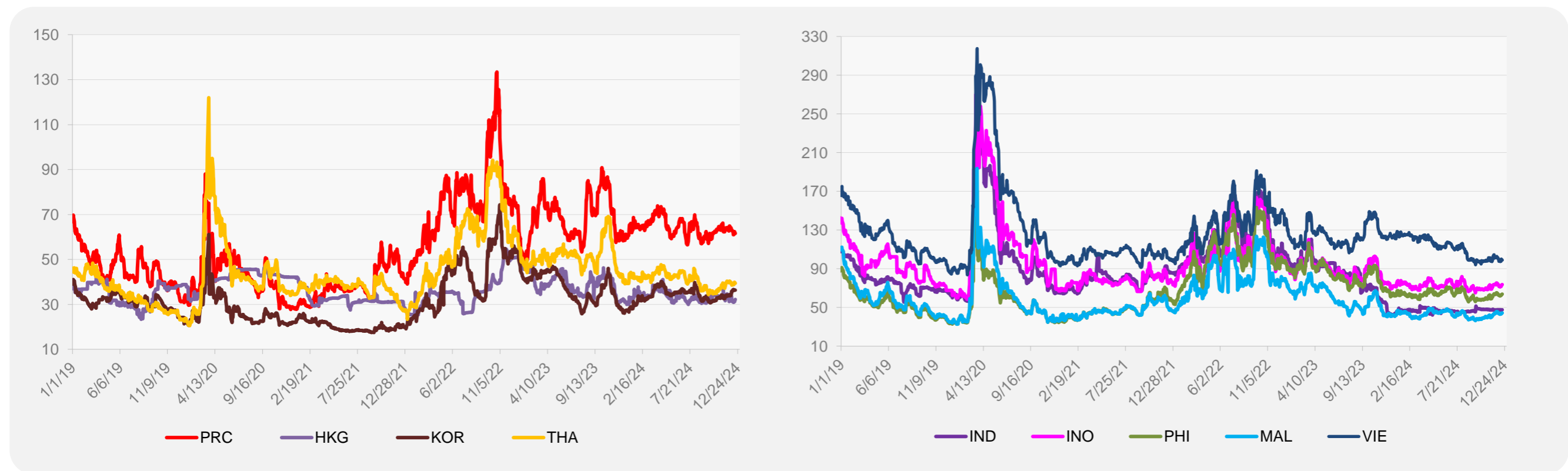


Source: ADB calculations using data from Bloomberg.

### 5-YEAR LOCAL CURRENCY GOVERNMENT BOND YIELDS (%)



### 5-YEAR CREDIT DEFAULT SWAP<sup>1</sup>



<sup>1</sup> In USD and based on sovereign bonds.  
Source: ADB calculations using data from Bloomberg.